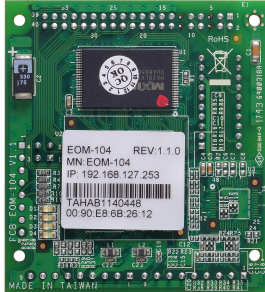


EOM-104 Series

4-port embedded managed Ethernet switch modules



Features and Benefits

- 10/100BaseT(X) and 100BaseFX Ethernet interfaces
- Turbo Ring and RSTP/STP for network redundancy
- SNMP and email alerts for event trapping and notifications
- Two-thirds the size of a business card
- Low power consumption
- -40 to 75°C operating temperature range

Certifications



Introduction

The EOM-104 Series is designed for device manufacturers who would like to embed Ethernet modules in their products to enhance performance and reliability. The EOM-104 Series provides an easy and cost-effective integrated solution for adding an Ethernet switch module to an existing product.

The modules support 10/100M Ethernet transmission and come with Turbo Ring's fast recovery time of under 20 ms. The EOM-104 Series provides a rich set of peripherals, such as Turbo Ring Enable and GPIO programming pins, and is an ideal solution for embedded Ethernet applications.

Specifications

Ethernet Interface

| | |
|-----------|--|
| Standards | IEEE 802.3 for 10BaseT IEEE 802.3u for 100BaseT(X) and 100BaseFX IEEE 802.3x for flow control IEEE 802.1p for Class of Service IEEE 802.1D-2004 for Spanning Tree Protocol IEEE 802.1w for Rapid Spanning Tree Protocol |
|-----------|--|

Ethernet Software Features

| | |
|-----------|---|
| Protocols | BOOTP, DHCP Client, HTTP, RARP, RMON, SMTP, SNMPv1/v2c/v3, Syslog, Telnet, TFTP |
| MIB | Bridge MIB, Ethernet-like MIB, MIB-II, P-BRIDGE MIB, RMON MIB Groups 1, 2, 3, 9, RSTP MIB |

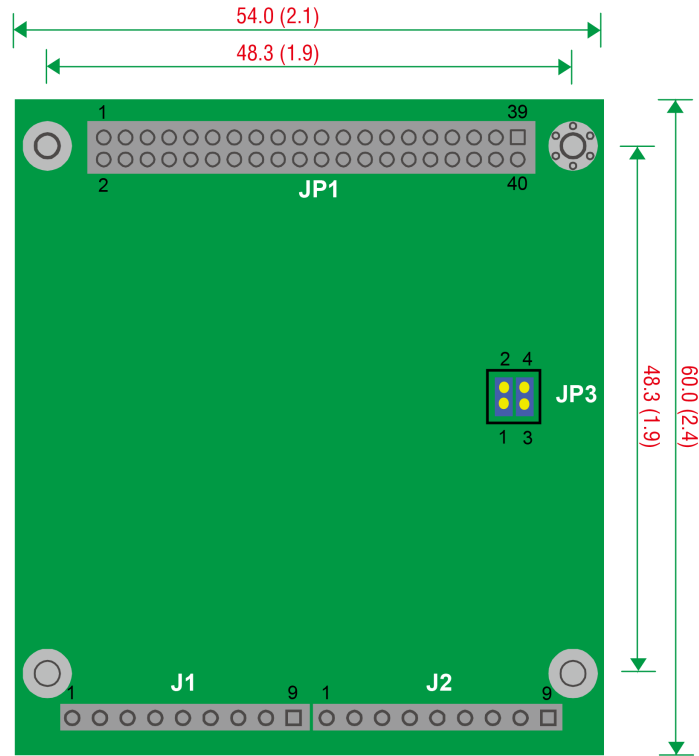
Switch Properties

| | |
|--------------------|-----------|
| MAC Table Size | 1 K |
| Packet Buffer Size | 512 kbits |

| | |
|--|--|
| Ethernet Interface | |
| 10/100BaseT(X) Port | EOM-104: 4 EOM-104-FO: 2 |
| 100BaseFX Port | EOM-104-FO: 2 EOM-104-FO 20PCS: 2 EOM-104-FO Evaluation Kit: 2 |
| Connector | 1 connector with 2 x 20 pins, 2 connectors with 1 x 9 pins, and 1 connector with 2 x 2 pins |
| Serial Interface | |
| Console Port | RS-232 (TxD, RxD, DTR, DSR) |
| Ethernet Interface | |
| GPIO | 4 x Programmable I/O pins |
| Power Parameters | |
| Input Current | EOM-104: 0.48 A @ 3.3 VDC EOM-104-FO: 1.1 A @ 3.3 VDC |
| Physical Characteristics | |
| Dimensions | 54 x 60 x 8.25 mm (2.13 x 2.36 x 0.32 in) |
| Weight | 21 g (0.046 lb) |
| Environmental Limits | |
| Operating Temperature | -40 to 75°C (-40 to 167°F) |
| Storage Temperature (package included) | -40 to 85°C (-40 to 185°F) |
| Ambient Relative Humidity | 5 to 95% (non-condensing) |
| Standards and Certifications | |
| EMC | EN 55032/24 |
| EMI | CISPR 32, FCC Part 15B Class A |
| Warranty | |
| Warranty Period | 5 years |
| Details | See www.moxa.com/warranty |
| Package Contents | |
| Device | EOM-104: 1 x EOM-104 module EOM-104 20PCS: 20 x EOM-104 module EOM-104 Evaluation Kit: 1 x EOM-104 module with evaluation board EOM-104-FO: 1 x EOM-104-FO module EOM-104-FO 20PCS: 20 x EOM-104-FO module EOM-104-FO Evaluation Kit: 1 x EOM-104-FO module with evaluation board |
| Power Supply | EOM-104/104-FO Evaluation Kit: 1 x universal power adapter, 2 x power cord |
| Cable | 1 x Null modem serial cable, 1 x Ethernet crossover cable (EOM-104/104-FO Evaluation Kit) 1 x accessory pack (EOM-104/104-FO, EOM-104/104-FO Evaluation Kit) 20 x accessory pack (EOM-104 20PCS, EM-104-FO 20PCS) |
| Documentation | 1 x document and software CD 1 x warranty card |

Dimensions

Unit: mm (inch)



Ordering Information

| Model Name | 10/100BaseT(X) Ports | 100BaseFX Ports | 20 pcs per package | Evaluation Kit | Operating Temp. |
|---------------------------|----------------------|-----------------|--------------------|----------------|-----------------|
| EOM-104 | 4 | - | - | - | -40 to 75°C |
| EOM-104 20PCS | 4 | - | ✓ | - | -40 to 75°C |
| EOM-104 Evaluation Kit | 4 | - | - | 1 | -40 to 75°C |
| EOM-104-FO | 2 | 2 | - | - | -40 to 75°C |
| EOM-104-FO 20PCS | 2 | 2 | ✓ | - | -40 to 75°C |
| EOM-104-FO Evaluation Kit | 2 | 2 | - | 1 | -40 to 75°C |

Accessories (sold separately)

Software

| | |
|--------|---|
| MXview | Industrial network management software designed for converged automation networks |
|--------|---|

© Moxa Inc. All rights reserved. Updated Nov 12, 2018.

This document and any portion thereof may not be reproduced or used in any manner whatsoever without the express written permission of Moxa Inc. Product specifications subject to change without notice. Visit our website for the most up-to-date product information.